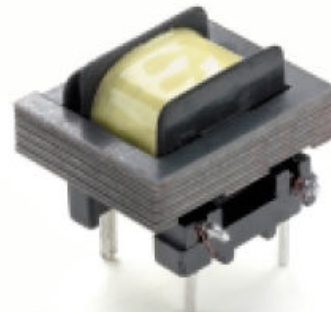


Standex Electronics

Current Transformers, 50/60 Hz

20 AMP CURRENT TRANSFORMERS OFFER A PLUG-IN SOLUTION FOR P.C. BOARD MOUNTING



U.S. Patent # 6,072,380

Designed for use with automated insertion equipment, the Standex CSB current transformer features an integrated, primary winding in a low cost, compact package. The transformer is varnish impregnated to reduce audible noise. Isolation from the primary to the secondary and the core is tested at 2500 vrms. The bobbin material meets the UL 94 V-0 flammability requirement. The operating temperature range is -40°C to 125°C. Two standard core materials are available. Applications include over-current sensing, isolated-current indicators, load variation sensing, and proportional current feedback. For more details, visit our web site at www.standexelectronics.com.

Electrical Data (25°C)

Part Number	Current Ratio	Accuracy ²	Linearity ¹	Maximum Output (60Hz) ³
CSB470680	680:1	±2%	<1%	2.2 vrms
CSB471000	1000:1	±2%	<1%	3.2 vrms
CSB471500	1500:1	±2%	<1%	4.7 vrms
CSB472500	2500:1	±2%	<1%	7.9 vrms
CSB430680	680:1	±5%	<5%	2.2 vrms
CSB431000	1000:1	±5%	<5%	3.2 vrms
CSB431500	1500:1	±5%	<5%	4.7 vrms
CSB432500	2500:1	±5%	<5%	7.9 vrms

1. Tested at 10 mv output per 1 amp input from 1 to 20 amps at 60 Hz.
2. Tested with 10 amp input and 100 mv output at 60 Hz.
3. Rated for 20 amp input.

Build Your Own Standard Part Number

To build your own part number, specify the current ratio and the core material. Core material 7 offers improved linearity and accuracy.

