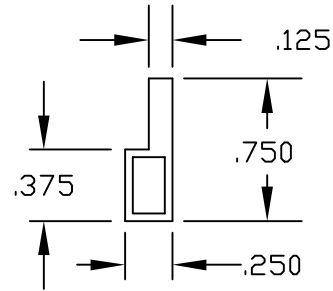
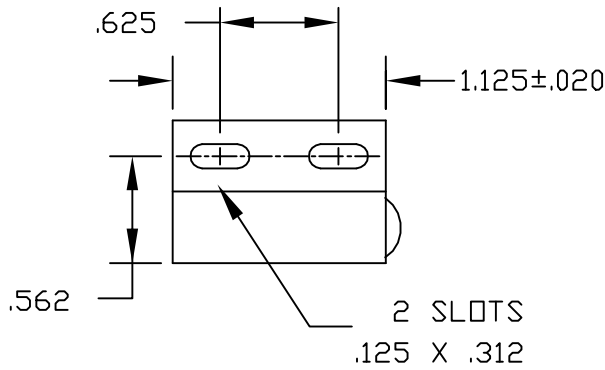
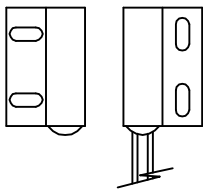


B12472 ACTUATOR

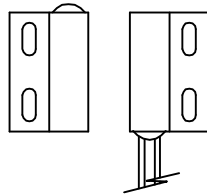


B12473 ACTUATOR

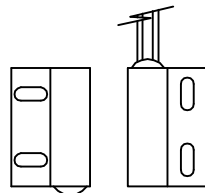
B12472 ACTUATOR  
SHOWN WITH THE  
R12465 SENSOR



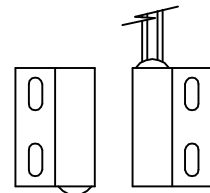
B12473 ACTUATOR  
SHOWN WITH THE  
R12465 SENSOR



B12472 ACTUATOR  
SHOWN WITH THE  
R12466 SENSOR



B12473 ACTUATOR  
SHOWN WITH THE  
R12466 SENSOR



SENSORS ARE SUPPLIED AS A SEPARATE ITEM.  
UNLESS OTHERWISE SPECIFIED, THE TOLERANCE  
SHALL BE  $\pm .010$ .  
ALL DIMENSIONS ARE IN INCHES.

Standex Electronics



a Standex Company

CUSTOMER	CUSTOMER P/N	APPROVAL	DATE	STANDEX PART NO.
STOCK			06/11/02	B12472/B12473